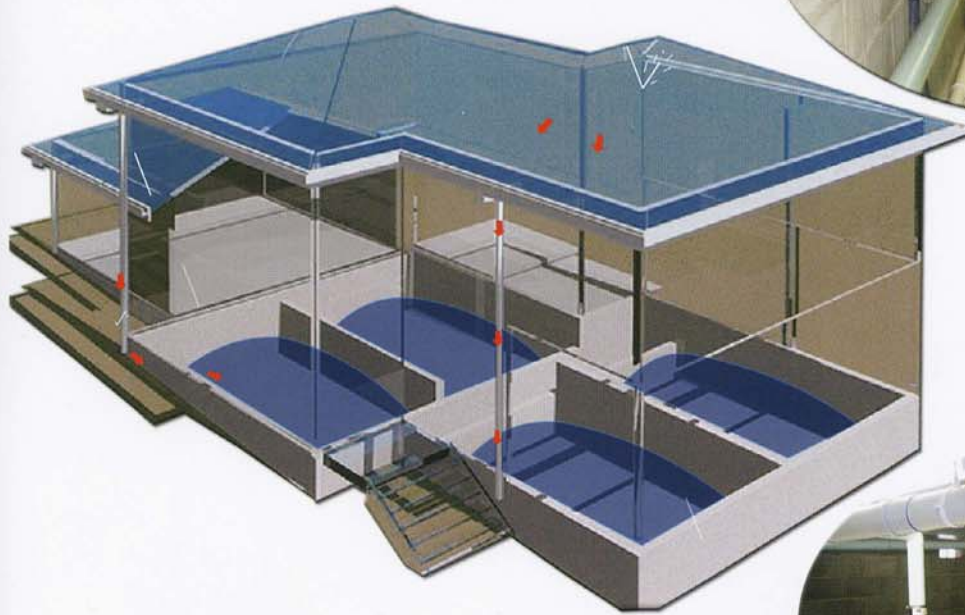




RAINWATER

■ ■ ■ raise your vision

The WaterCell is a water management system that provides a self sustainable potable water supply for a wide range of buildings. It can be utilised to harvest and store clean water without the need for chemical treatment or a mandatory on site rain water detention system. It forms an integral part of the building structure and is an efficient and cost effective way to manage water. The WaterCell system can effectively store 100% of your annual water requirements.



At the heart of the system is a flexible and serviceable series of individual water cells contained within the building footprint and comprises of the following:

- ▼ Flexible cells to harvest & store rainwater (up to 16,000 liters per cell)
- ▼ A sub-floor structure forming an integral part of the foundation to support the cells
- ▼ A piping, pump & filter system to reticulate the water for re-use

The WaterCell system has an application lodged for a Good Environmental Choice Label accreditation.

VISION WATER PTY LTD

Suite 2, Level 2, 10 William St, P.O. Box 1746, Gosford 2250
Telephone: (02) 4324 3622 Facsimile: (02) 4324 3120 Email: info@vision-water.com



The WaterCell



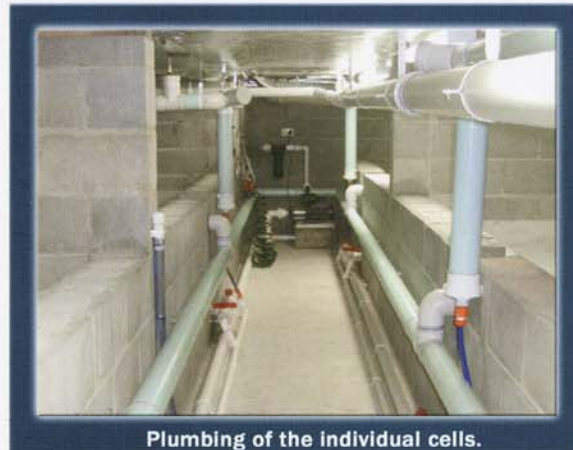
Determine requirement.



WaterCells incorporated in foundation.



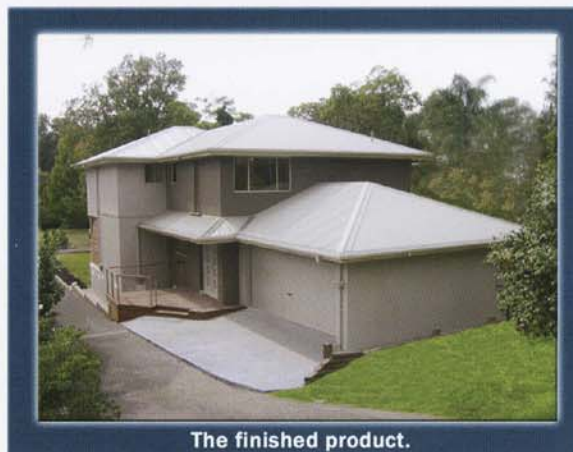
Install flexible liner in cavity.



Plumbing of the individual cells.



Harvest/retain within building footprint.



The finished product.

Engineering design and installation to be performed by a Visionwater qualified licensed tradesman. Visionwater is a registered trademark and its systems are patented. For more information on the Visionwater system contact Geoff Ball on (02) 4324 3622 or email info@vision-water.com

VISION WATER PTY LTD

Suite 2, Level 2, 10 William St, P.O. Box 1746, Gosford 2250
Telephone: (02) 4324 3622 Facsimile: (02) 4324 3120 Email: info@vision-water.com